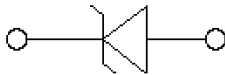
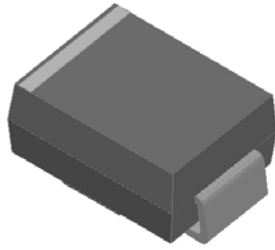
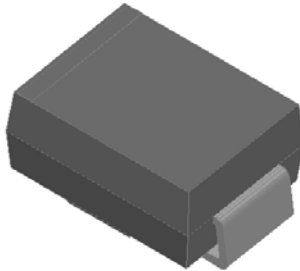


## Surface Mount Transient Voltage Suppressors

### Uni-directional



### Bi-directional



### Features

- UL recognition, file # E517074
- For surface mounted applications
- Low-profile package
- Ideal for automated placement
- Available in Unidirectional and Bidirectional
- 2000 W peak pulse power capability with a 10/1000  $\mu$ s waveform
- Low incremental surge resistance, excellent clamping capability
- Very fast response time
- High temperature soldering guaranteed: 260 °C/10 s at terminals
- Meets MSL level 1
- Component in accordance to RoHS

### Typical Applications

Use in sensitive electronics protection against voltage transients induced by inductive load switching and lighting on ICs, MOSFET, signal lines of sensor units for consumer, computer, industrial, telecommunication.

### Mechanical Data

- **Package:** DO-214AA (SMB)  
Molding compound meets UL 94 V-0 flammability rating, RoHS-compliant, halogen-free
- **Terminals:** Matte tin plated leads, solderable per J-STD-002B and JESD22-B102D
- **Polarity:** For uni-directional types the band denotes cathode end, no marking on bi-directional types

### ■Maximum Ratings ( $T_a=25^\circ\text{C}$ Unless otherwise specified)

PARAMETER	SYMBOL	UNIT	Max
Peak power dissipation, with a 10/1000us waveform <sup>(1)</sup> <sup>(2)</sup> (Fig.1)	$P_{PPM}$	W	2000
Peak pulse current, with a 10/1000us waveform <sup>(1)</sup>	$I_{PPM}$	A	See Next Table
Power dissipation, on infinite heat sink at $T_L=75^\circ\text{C}$	$P_D$	W	5.0
Peak forward surge current, 8.3 ms single half sine-wave unidirectional only <sup>(2)</sup>	$I_{FSM}$	A	100
Operating junction and storage temperature range	$T_J, T_{STG}$	$^\circ\text{C}$	-55 to +150
Electrostatic Discharge (IEC61000-4-2 air discharge)	ESD	KV	$\pm 30$
Electrostatic Discharge (IEC61000-4-2 contact discharge)			



# SMB20J SERIES

## ■Electrical Characteristics (T<sub>A</sub>=25°C Unless otherwise specified)

PARAMETER	SYMBOL	UNIT	VALUE
Maximum instantaneous forward voltage @ 25A for unidirectional only	V <sub>F</sub>	V	5.0

Notes:

- (1) Non-repetitive current pulse, per Fig. 3 and derated above T<sub>A</sub> = 25°C per Fig.2.
- (2) Mounted on 0.2 x 0.2" (5.0 x 5.0 mm) copper pads to each terminal.

## ■Thermal Characteristics (T<sub>A</sub>=25°C Unless otherwise specified)

PARAMETER	SYMBOL	UNIT	Conditions	VALUE
Thermal resistance(Typical)	R <sub>θJL</sub>	°C/W	junction to lead	20
	R <sub>θJA</sub>	°C/W	junction to ambient	100

Notes:

- (3) Non-repetitive current pulse, per Fig. 3 and derated above T<sub>A</sub> = 25°C per Fig.2.
- (4) Thermal resistance from junction to ambient and from junction to lead mounted on P.C.B. with 0.3" x 0.3" (8.0 mm x 8.0 mm) copper pad areas

## ■Ordering Information (Example)

PREFERRED P/N	PACKING CODE	UNIT WEIGHT(g)	MINIMUM PACKAGE(pcs)	INNER BOX QUANTITY(pcs)	OUTER CARTON QUANTITY(pcs)	DELIVERY MODE
SMB20J SERIES	F1	Approximate 0.0975	3000	/	48000	13" reel
SMB20J SERIES	F2	Approximate 0.0975	750	3000	24000	7" reel
SMB20J SERIES	F3	Approximate 0.0975	500	2000	16000	7" reel

## ■Electrical Characteristics (T<sub>A</sub>=25°C Unless otherwise specified)

Part Number (Uni)	Part Number (Bi)	Breakdown Voltage V <sub>BR</sub> @I <sub>T</sub>			Maximum Reverse Leakage I <sub>R</sub> @ V <sub>RWM</sub> (μA)	Working Peak Reverse Voltage V <sub>RWM</sub> (V)	Maximum Reverse Surge Current I <sub>PP</sub> <sup>(4)</sup> (A)	Maximum Clamping Voltage V <sub>c</sub> @ I <sub>PP</sub> (V)
		Min(V)	Max (V)	I <sub>T</sub> <sup>(3)</sup> (mA)				
SMB20J20A	SMB20J20CA	22.20	24.50	1	5	20.0	61.73	32.4
SMB20J22A	SMB20J22CA	24.40	26.90	1	5	22.0	56.33	35.5
SMB20J24A	SMB20J24CA	26.70	29.50	1	5	24.0	51.41	38.9
SMB20J26A	SMB20J26CA	28.90	31.90	1	5	26.0	47.51	42.1
SMB20J28A	SMB20J28CA	31.10	34.40	1	5	28.0	44.05	45.4
SMB20J30A	SMB20J30CA	33.30	36.80	1	5	30.0	41.32	48.4
SMB20J33A	SMB20J33CA	36.70	40.60	1	5	33.0	37.52	53.3
SMB20J36A	SMB20J36CA	40.00	44.20	1	5	36.0	34.43	58.1
SMB20J40A	SMB20J40CA	44.40	49.10	1	5	40.0	31.01	64.5
SMB20J43A	SMB20J43CA	47.80	52.80	1	5	43.0	28.81	69.4
SMB20J45A	SMB20J45CA	50.00	55.30	1	5	45.0	27.51	72.7
SMB20J48A	SMB20J48CA	53.30	58.90	1	5	48.0	25.84	77.4
SMB20J51A	SMB20J51CA	56.70	62.70	1	5	51.0	24.27	82.4
SMB20J54A	SMB20J54CA	60.00	66.30	1	5	54.0	22.96	87.1
SMB20J58A	SMB20J58CA	64.40	71.20	1	5	58.0	21.37	93.6

Notes:

- (3) Pulse test: t<sub>p</sub>≤50ms.
- (4) Surge current waveform per Fig. 3 and derated per Fig.2.



# SMB20J SERIES

## ■ Characteristics (Typical)

FIG1: Peak Pulse Power Rating Curve

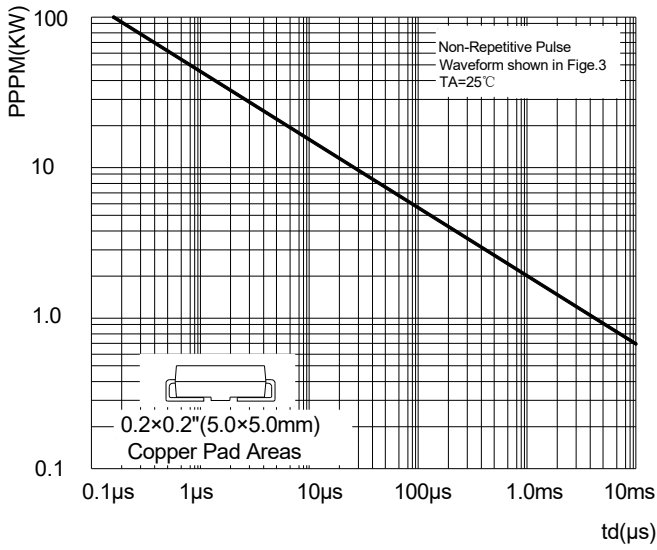


FIG2: Pulse Power or Current vs. Initial Junction Temperature

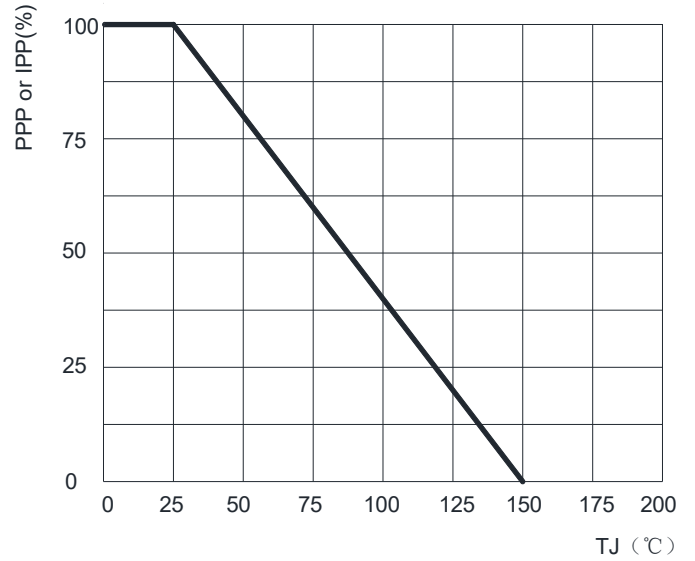


FIG3: Pulse Waveform

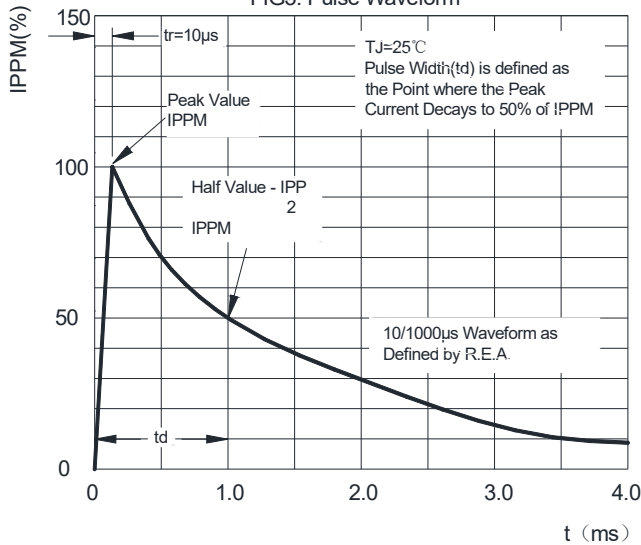


FIG4: Maximum Non-Repetitive Surge Current

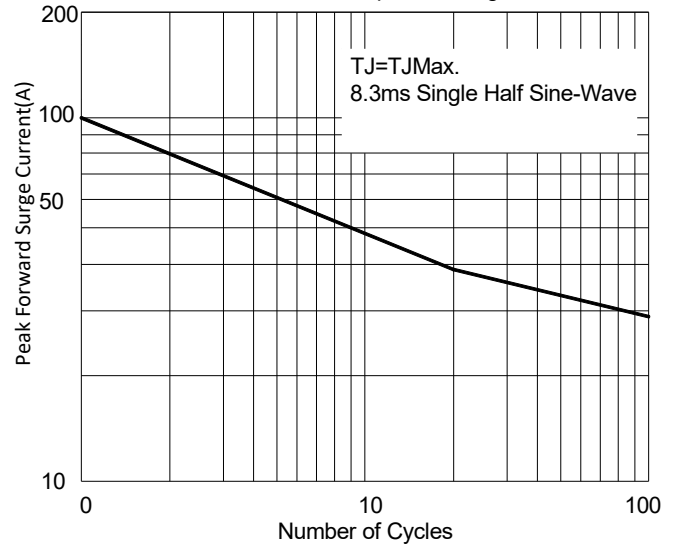
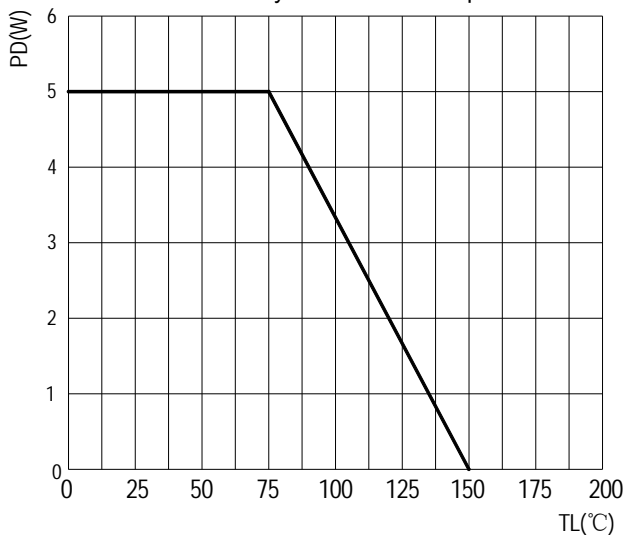


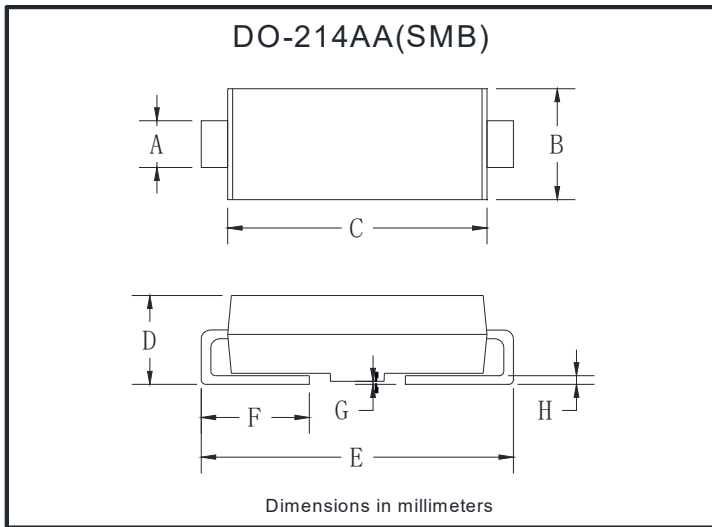
FIG5: Steady State Power Dissipation





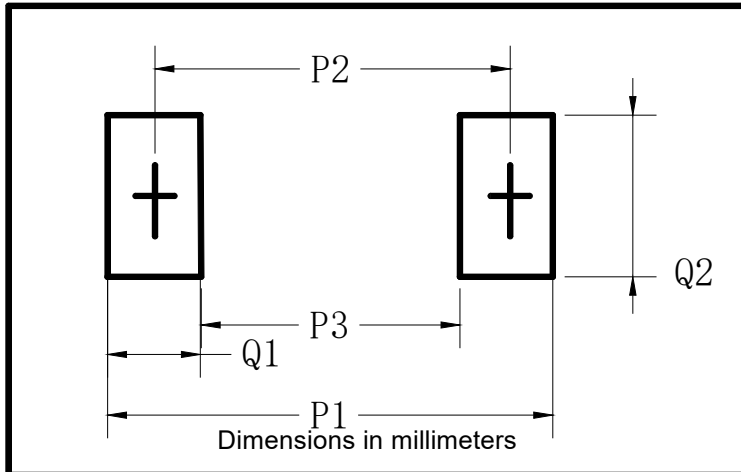
## SMB20J SERIES

### ■ Outline Dimensions



DO-214AA(SMB)		
Dim	Min	Max
A	1.85	2.15
B	3.30	3.94
C	4.05	4.75
D	1.99	2.61
E	5.21	5.59
F	0.90	1.41
G	0.05	0.20
H	0.15	0.31

### ■ Suggested pad layout



DO-214AA(SMB)	
Dim	Millimeters
P1	6.8
P2	4.3
P3	1.8
Q1	2.5
Q2	2.3



## SMB20J SERIES

---

### Disclaimer

The information presented in this document is for reference only. Yangzhou Yangjie Electronic Technology Co., Ltd. reserves the right to make changes without notice for the specification of the products displayed herein to improve reliability, function or design or otherwise.

The product listed herein is designed to be used with ordinary electronic equipment or devices, and not designed to be used with equipment or devices which require high level of reliability and the malfunction of which would directly endanger human life (such as medical instruments, transportation equipment, aerospace machinery, nuclear-reactor controllers, fuel controllers and other safety devices), Yangjie or anyone on its behalf, assumes no responsibility or liability for any damages resulting from such improper use of sale.

This publication supersedes & replaces all information previously supplied. For additional information, please visit our website [http:// www.21yangjie.com](http://www.21yangjie.com) , or consult your nearest Yangjie's sales office for further assistance.